

Town of Rome
Kennebec County, Maine
Basic Planning Map
2022 Comprehensive Plan

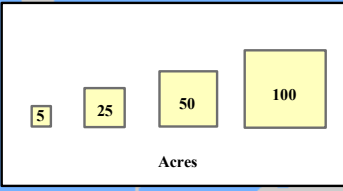
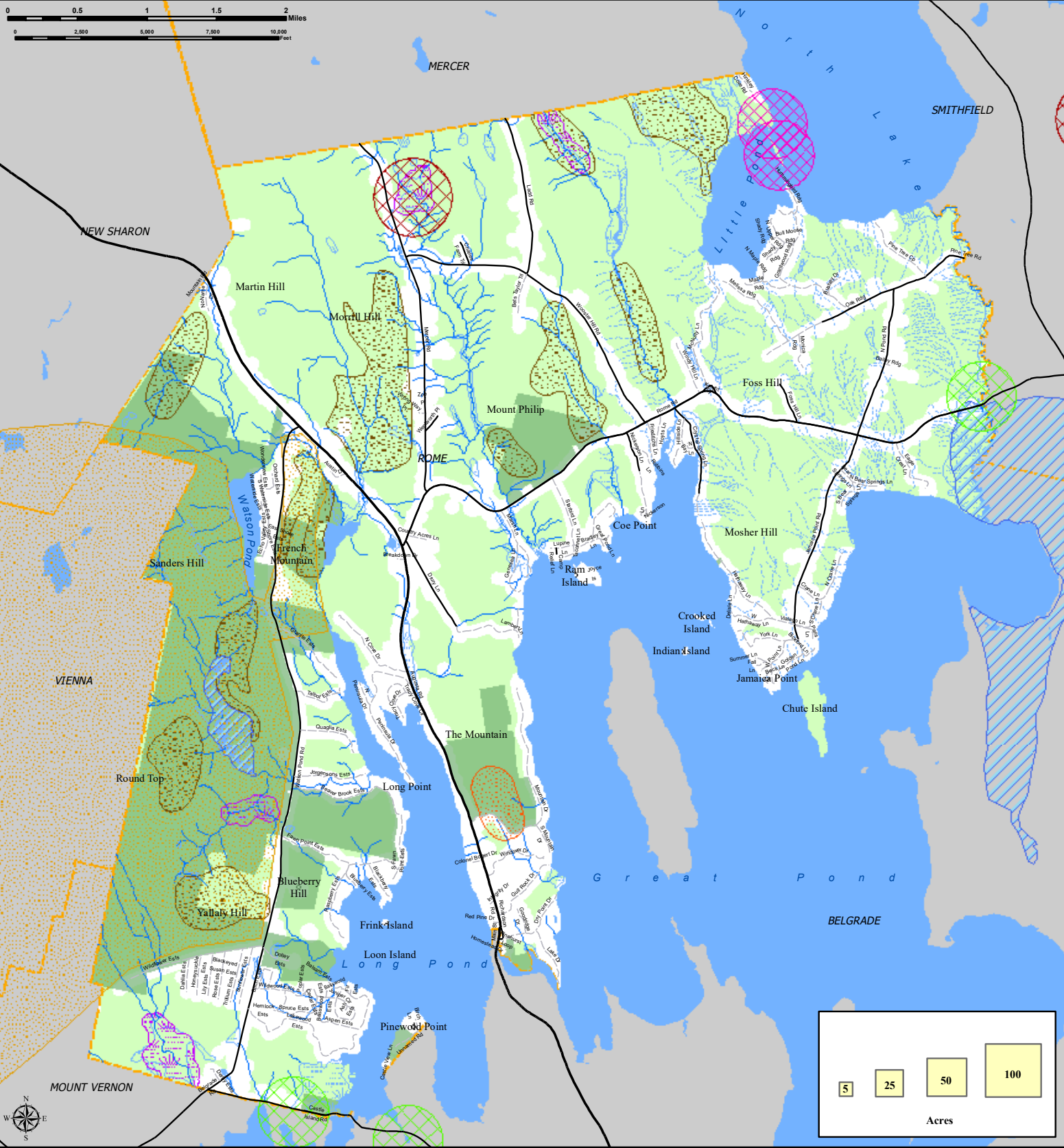
Map Legend

Roads

- State Highway
- State Aid
- Local
- Private
- Lakes, Ponds & Rivers
- Streams



Neither KVCOG nor the Town of Rome assume any liability for the data delineated herein. All information depicted on this map is for planning purposes only and non-regulatory. Boundary data is based on digital sources and may differ from ground-based observations. Data Sources: Maine Office of GIS, Maine DOT Created 06-2021 by JG

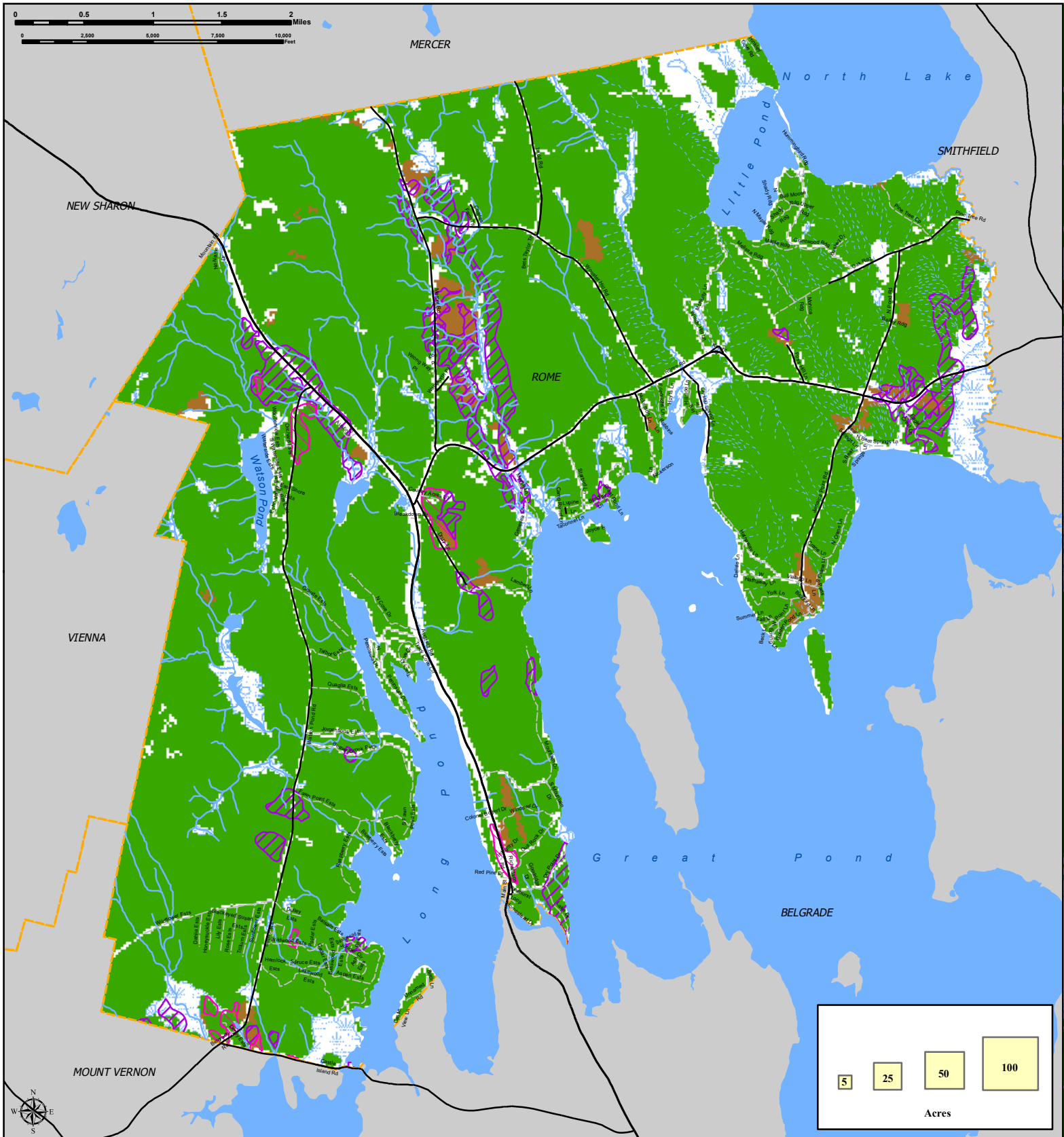


Town of Rome
Kennebec County, Maine
Critical Natural Resources Map
2022 Comprehensive Plan

Map Legend	
Roads	Focus Areas of Statewide Ecological Significance
— State Highway	■ Kennebec Highlands
— State Aid	Species: Endangered, Threatened, of Concern
— Local	■ Eastern Ribbon Snake
— Private	■ Great Blue Heron
■ Lakes, Ponds & Rivers	■ Bald Eagle nesting sites
— Perennial Streams	Rare, threatened, and endangered plant Habitats
— Intermittent Streams	■ Hardwood to mixed forest
■ Inland Waterfowl / Wading bird Habitat	■ Open wetland / Forested wetland
■ Deer Wintering Areas	
■ Conserved Lands	
■ Undeveloped Blocks	
■ Wetlands	



Neither KVCOG nor the Town of Rome assume any liability for the data delineated herein. All information depicted on this map is for planning purposes only and non-regulatory. Boundary data based on digital sources and may differ from ground-based observations.
 Data Sources: Maine Office of GIS, Maine DOT Created 01-2022 by JG

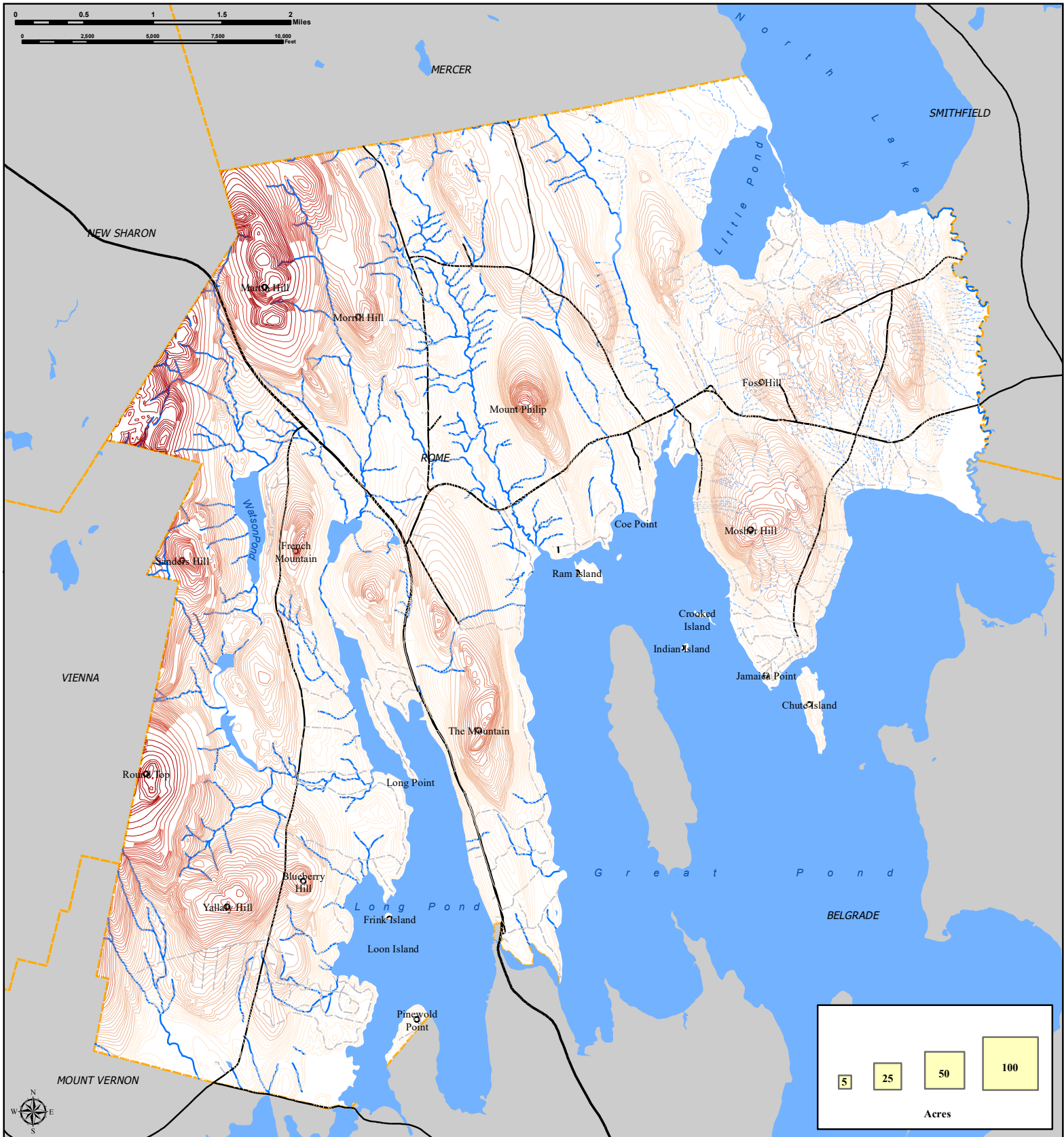


Town of Rome
Kennebec County, Maine
Agriculture and Forestry Resources Map
2022 Comprehensive Plan

Map Legend		
Roads	Lakes, Ponds & Rivers	Land Cover
State Highway	Perennial Streams	Crops / Hay / Pasture
State Aid	Intermittent Streams	Forest
Local	Wetlands	Farmland
Private		All areas are prime farmland
		Farmland of statewide importance



Neither KVCOG nor the Town of Rome assume any liability for the data delineated herein. All information depicted on this map is for planning purposes only and non-regulatory. Boundary data based on digital sources and may differ from ground-based observations.
 Data Sources: Maine Office of GIS, Maine DOT Created 03-2022 by JG

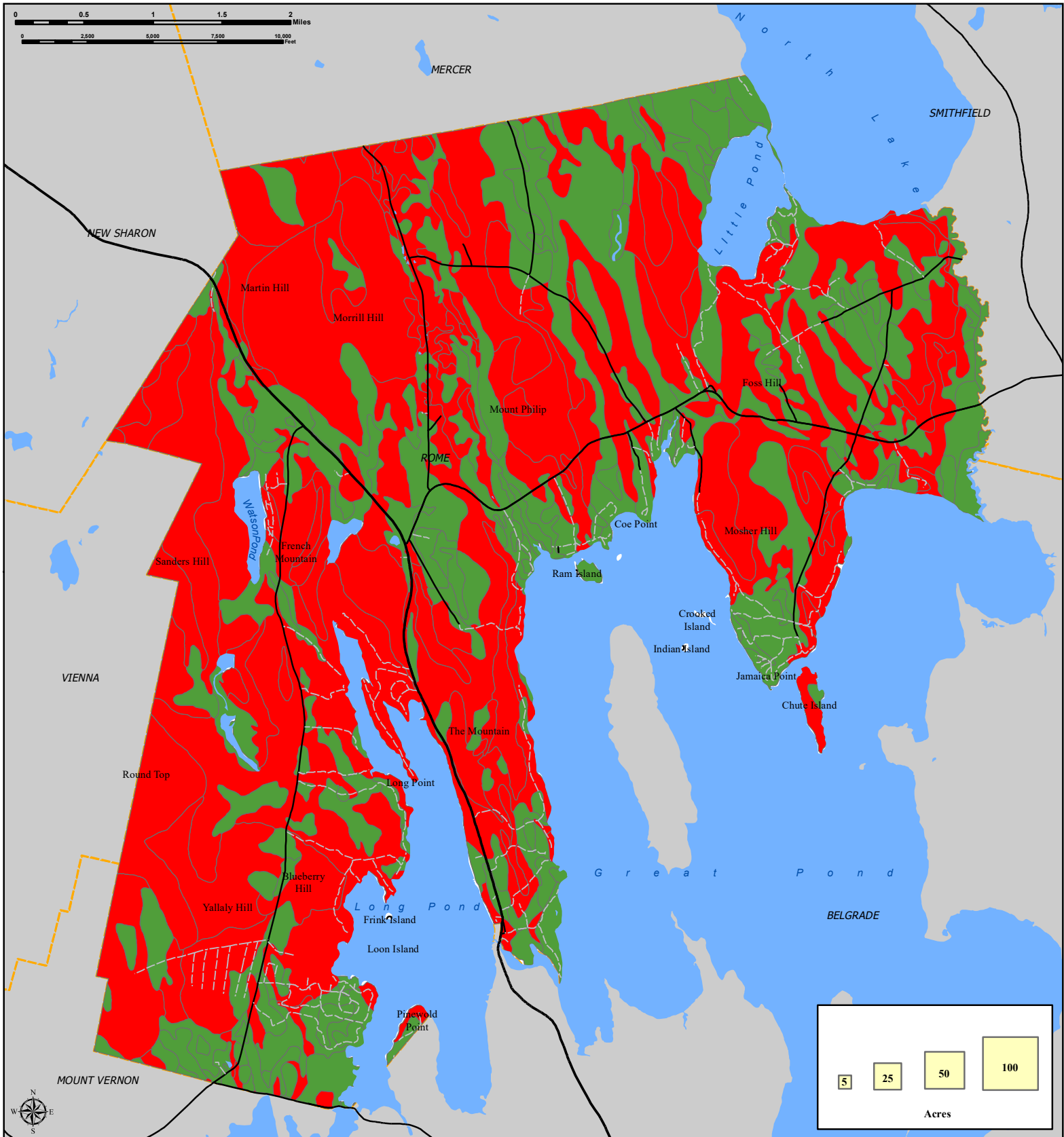


Town of Rome
Kennebec County, Maine
Topography Map
2022 Comprehensive Plan

Map Legend		
Contours in Feet	Roads	Lakes, Ponds & Rivers
240 - 390	State Highway	Streams
391 - 550	State Aid	Perennial
551 - 710	Local	Intermittent
711 - 890	Private	
891 - 1130		



Neither KVCOG nor the Town of Rome assume any liability for the data delineated herein. All information depicted on this map is for planning purposes only and non-regulatory. Boundary data based on digital sources and may differ from ground-based observations.
 Data Sources: Maine Office of GIS, Maine DOT Created 01-2022 by JG



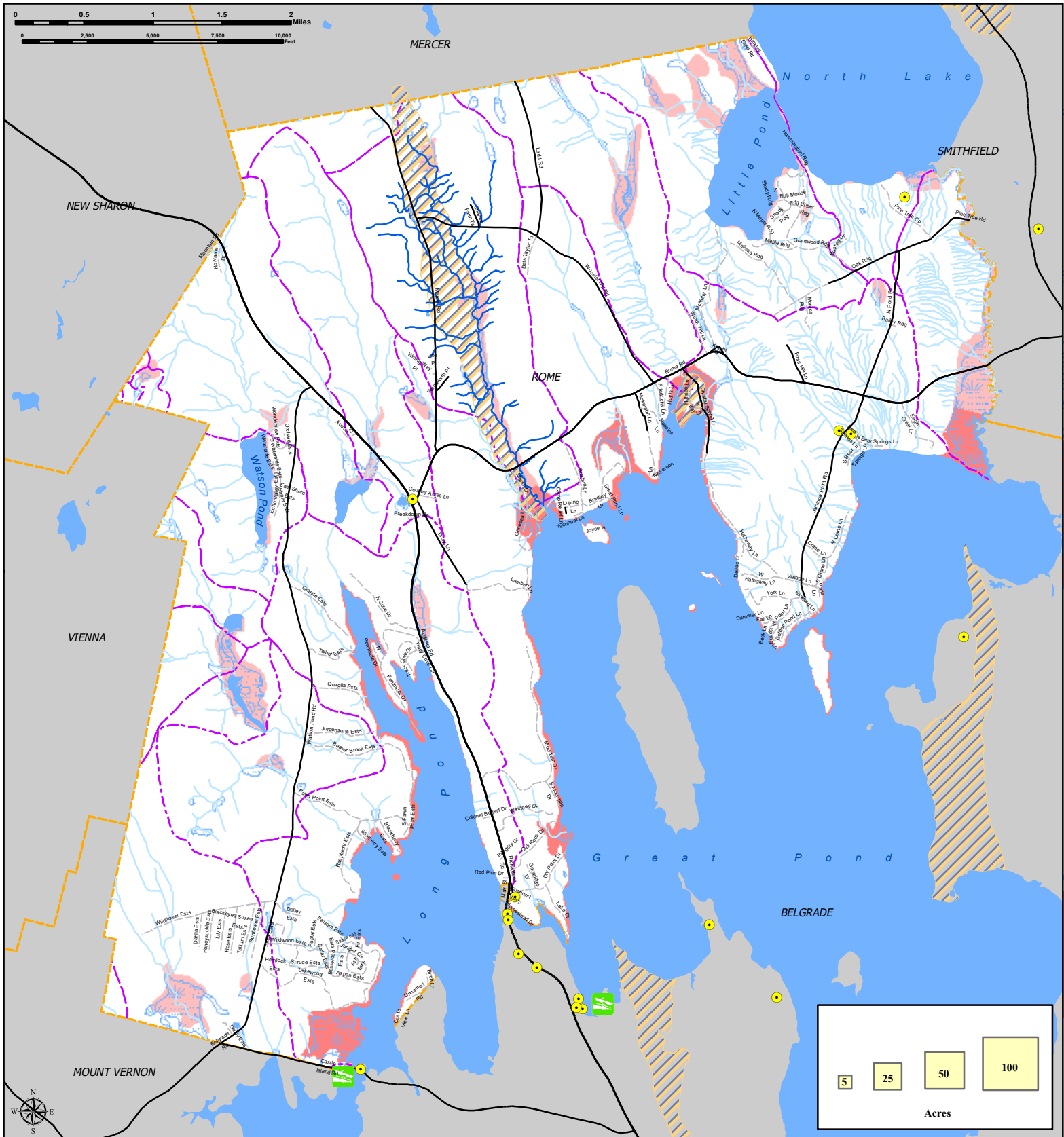
Town of Rome
Kennebec County, Maine
Steep Soils Map
2022 Comprehensive Plan

Map Legend

State Highway	Lakes, Ponds & Rivers
State Aid	Soils sloped >8%
Local	Soils <8%
Private	



Neither KVCOG nor the Town of Rome assume any liability for the data delineated herein. All information depicted on this map is for planning purposes only and non-regulatory. Boundary data based on digital sources and may differ from ground-based observations.
 Data Sources: Maine Office of GIS, Maine DOT Created 01-2022 by JG

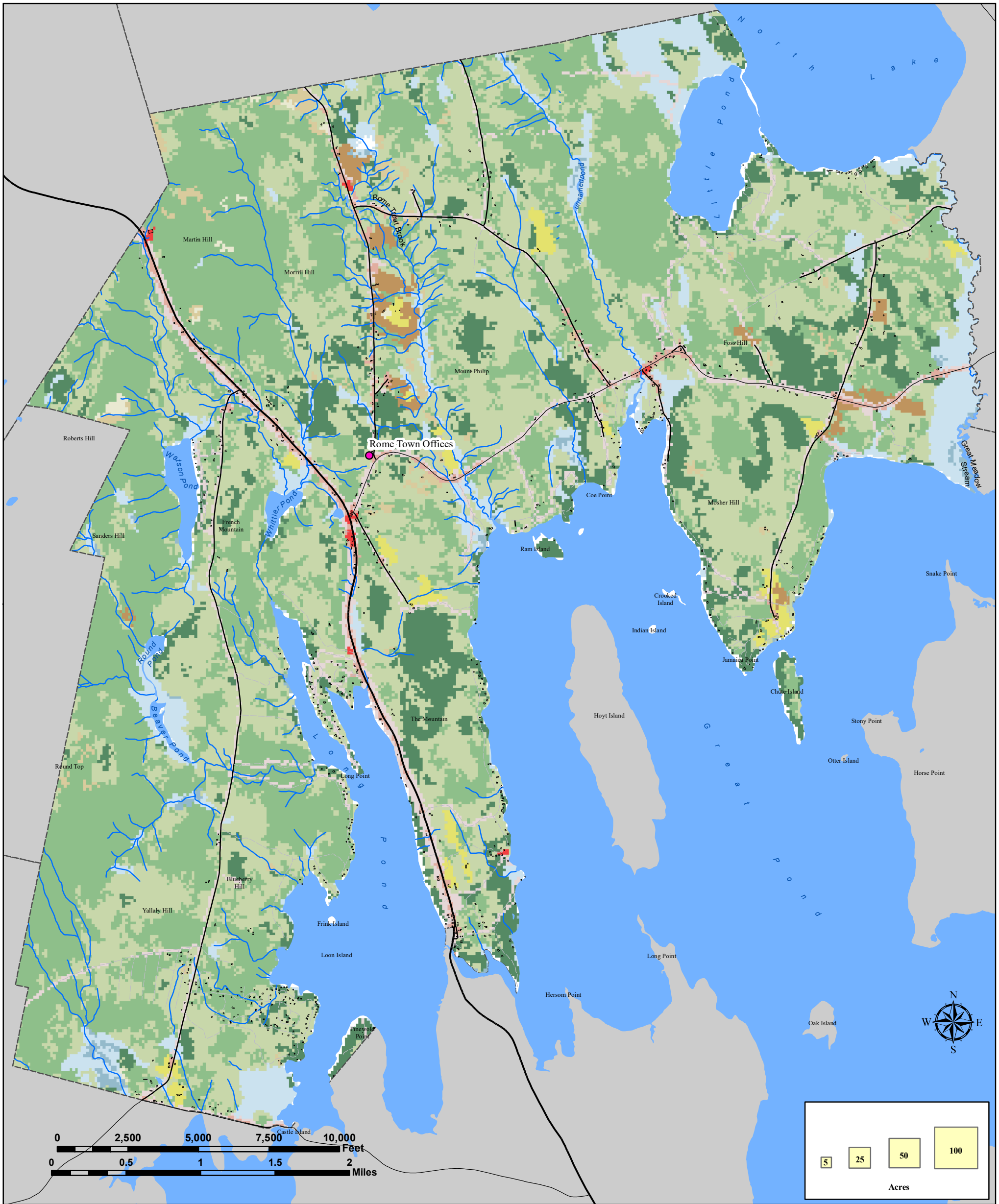


Town of Rome
Kennebec County, Maine
Water Resources Map
2022 Comprehensive Plan

Map Legend			
State Highway	Lakes, Ponds & Rivers	Aquifer w/Flow of 10-50 gpm	State Boat Launch
State Aid	Class AA Stream	Floodzones	Public Water Supply Wells
Local	Class B Stream	100 year Flood with Base Flood Elevations	
Private	Wetlands	100 year Flood with no Base Flood Elevation	
	Drainage Divides		



Neither KVCOG nor the Town of Rome assume any liability for the data delineated herein. All information depicted on this map is for planning purposes only and non-regulatory. Boundary data based on digital sources and may differ from ground-based observations.
 Data Sources: Maine Office of GIS, Maine DOT Created 01-2022 by JG

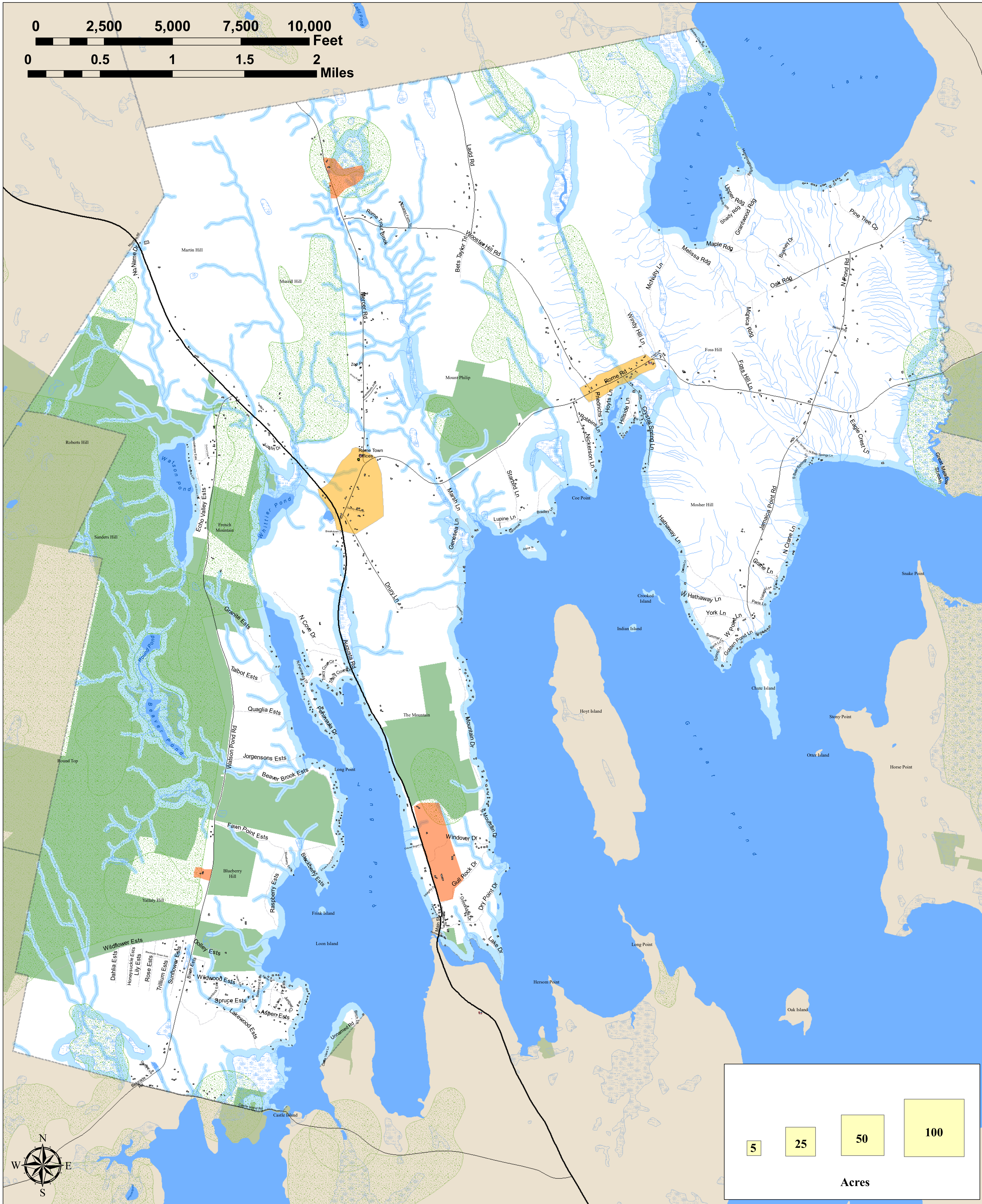
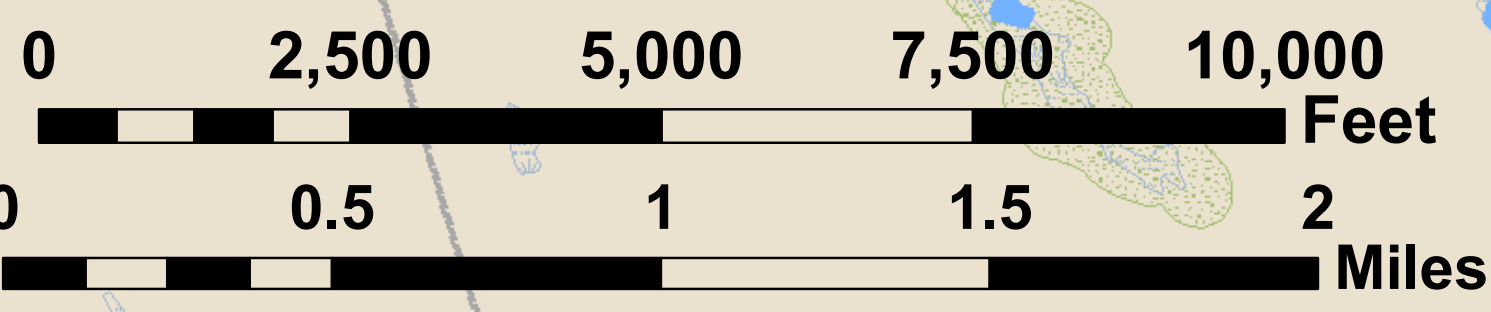


Town of Rome
Kennebec County, Maine
Existing Land Use Map
2022 Comprehensive Plan

Map Legend		
Roads	Land Cover	Land_Cover
— State Highway	Emergent Herbaceous Wetlands	Emergent Herbaceous Wetlands
— State Aid	Developed, Open Space	Developed, Open Space
🌊 Lakes, Ponds & Rivers	Woody Wetlands	Developed, Medium Intensity
🌊 Streams	Shrub/Scrub	Developed, Low Intensity
	Mixed Forest	Developed, High Intensity
	Herbaceous	Deciduous Forest
	Hay/Pasture	Cultivated Crops
	Evergreen Forest	Barren Land



Neither KVCOG nor the Town of Rome assume any liability for the data delineated herein. All information depicted on this map is for planning purposes only and non-regulatory. Boundary data is based on digital sources and may differ from ground-based observations.
 Data Sources: Maine Office of GIS, Maine DOT Created 06-2021 by JG



Town of Rome

Kennebec County, Maine

Future Land Use Map 2022 Comprehensive Plan

Map Legend

Roads	Lakes, Ponds & Rivers	Development Constraints	Growth Areas
— State hwy	— RomeStreams	Critical Natural Areas	Growth Areas
— State aid	Wetlands	Conserved Lands	Rural Area
— Local	Building Footprints	Shoreland Zones*	
— Private		Agricultural Areas	

* NOT TO BE USED AS OFFICIAL SHORELAND ZONING MAP

Neither KVCOG nor the Town of Rome assume any liability for the data delineated herein. All information depicted on this map is for planning purposes only and non-regulatory. Boundary data is based on digital sources and may differ from ground-based observations.
Data Sources: Maine Office of GIS, Maine DOT Created 07-2022 by JG



Town of Rome

Kennebec County, Maine

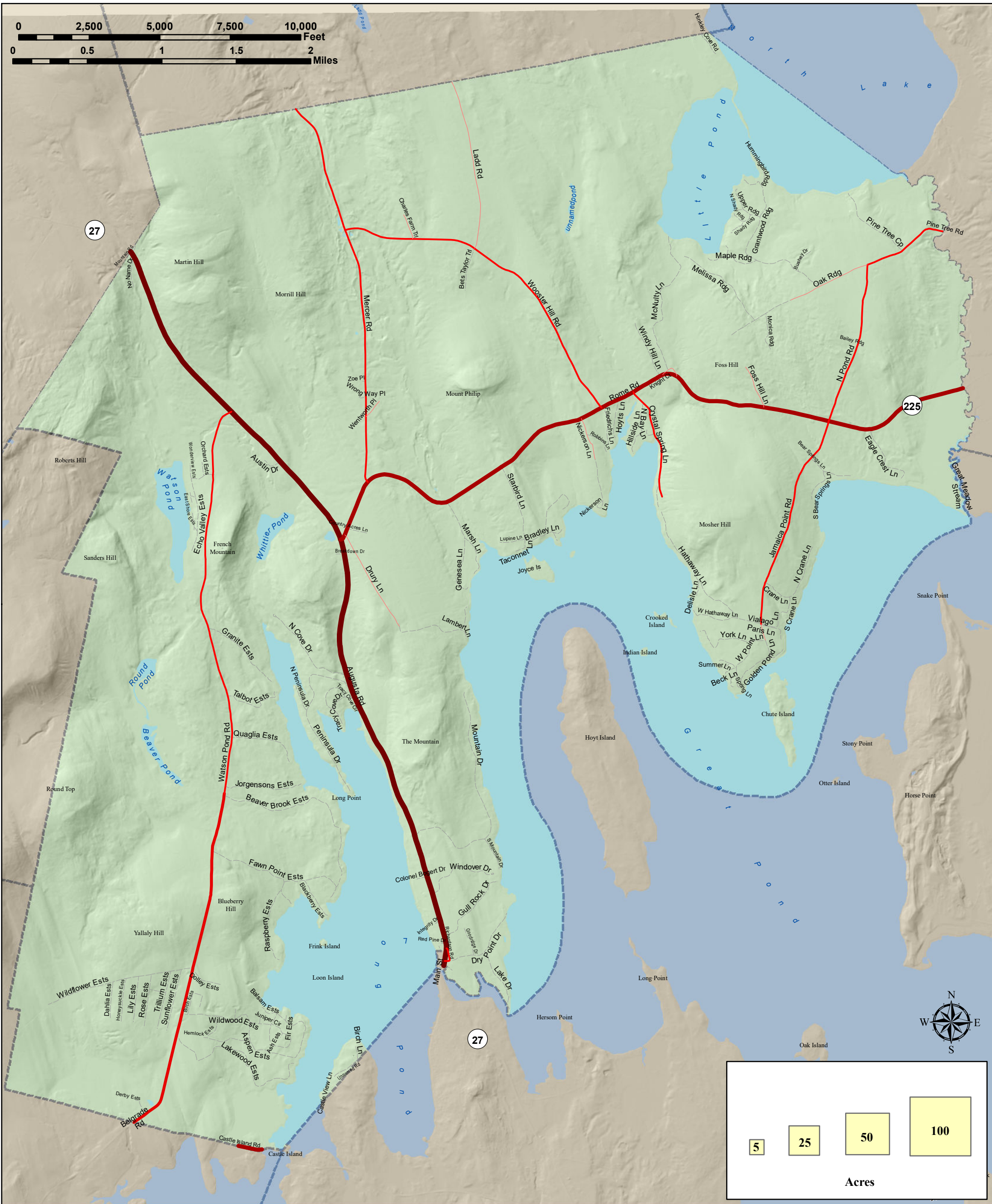
Transportation Map

2022 Comprehensive Plan

Map Legend	
Roads	Lakes, Ponds & Rivers
State Highway	Streams
State Aid	Bridges (Maintainer)
Local	State DOT
Private	Municipal



Neither KVCOG nor the Town of Rome assume any liability for the data delineated herein. All information depicted on this map is for planning purposes only and non-regulatory. Boundary data is based on digital sources and may differ from ground-based observations. Data Sources: Maine Office of GIS, Maine DOT Created 10-2021 by JG

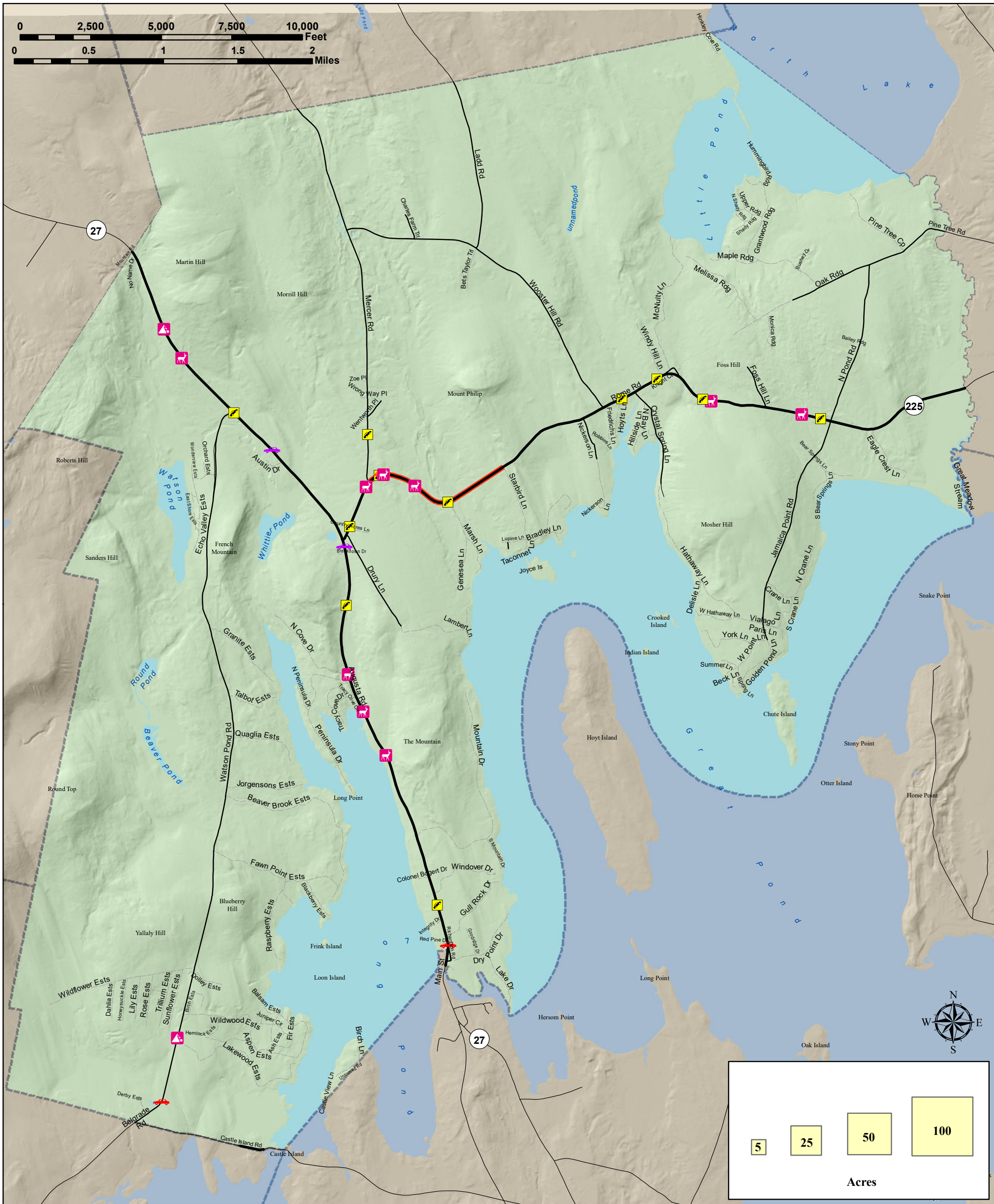


Town of Rome
Kennebec County, Maine
Transportation Map
2022 Comprehensive Plan

Map Legend	
Annual Average Daily Traffic	--- Private Roads
— 33 - 100	Lakes, Ponds & Rivers
— 101 - 500	
— 501 - 750	
— 751 - 2000	
— 2001 - 3635	



Neither KVCOG nor the Town of Rome assume any liability for the data delineated herein. All information depicted on this map is for planning purposes only and non-regulatory. Boundary data is based on digital sources and may differ from ground-based observations. Data Sources: Maine Office of GIS, Maine DOT Created 10-2021 by JG



Town of Rome

Kennebec County, Maine

Transportation Map

2022 Comprehensive Plan



Map Legend	
Roads	Crashes
— State	🦌 Deer
— State Aid	🚗 Head-on / Sideswipe
— Local	🚗 Rear End / Sideswipe
— Private	🚗 Rollover
🌊 Lakes, Ponds & Rivers	🚗 Thrown or Falling Object
🔴 High Crash Location Segment	🚗 Went Off Road

Neither KVCOG nor the Town of Rome assume any liability for the data delineated herein. All information depicted on this map is for planning purposes only and non-regulatory. Boundary data is based on digital sources and may differ from ground-based observations. Data Sources: Maine Office of GIS, Maine DOT Created 10-2021 by JG